

RoboCell

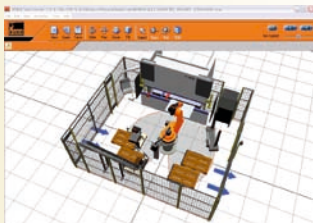
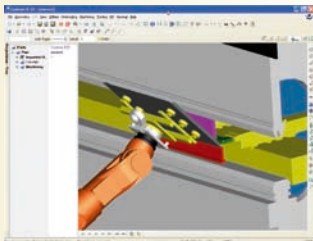
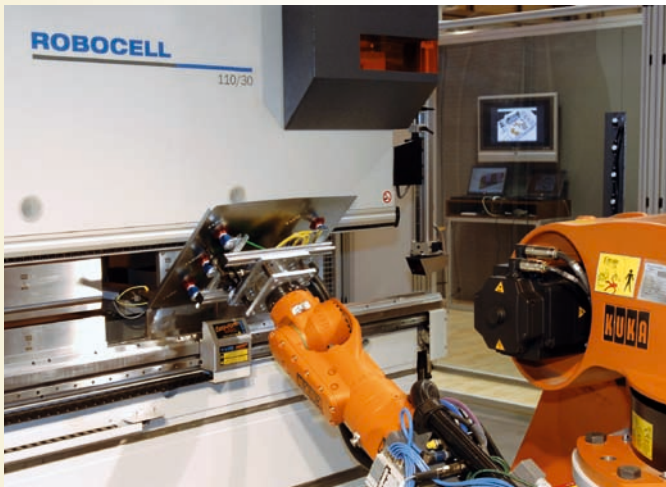


Robotised Bending Cell

- Affordable
- Intuitive
- Fast 'Art to Part'
- Flexible

RoboCell

Robotised Bending Cell



RoboCell is LVD's new automated robot bending cell offering flexible and affordable mid-level bending automation for your workshop.

RoboCell combines an LVD press brake, multi-axis Kuka robot and LVD CADMAN® software technology to provide an integrated automatic bending solution. RoboCell can be based upon either a PPEB or Easy-Form® series LVD press brake.

RoboCell is ideally suited to the bending of small to

medium sized components available in 80 – 110 ton bending force and 2.5 – 3 meter table configurations.

RoboCell key features:

Proven Technology

RoboCell utilises LVD's extensive 'Intelligent' bending database press brake technology and Kuka's industry proven robot technology.

Intuitive

RoboCell uses LVD's new CADMAN® Touch CNC control which provides a totally new and intuitive user inter-face minimizing input to the control, so the operator moves from drawing to part in fewer steps.

Fast 'Art to Part'

All press brake and robot programs are generated offline by LVD's integrated CADMAN-B 3D (Robot) and Kuka Sim software simplifying the 'Art to Part' process.

Flexible

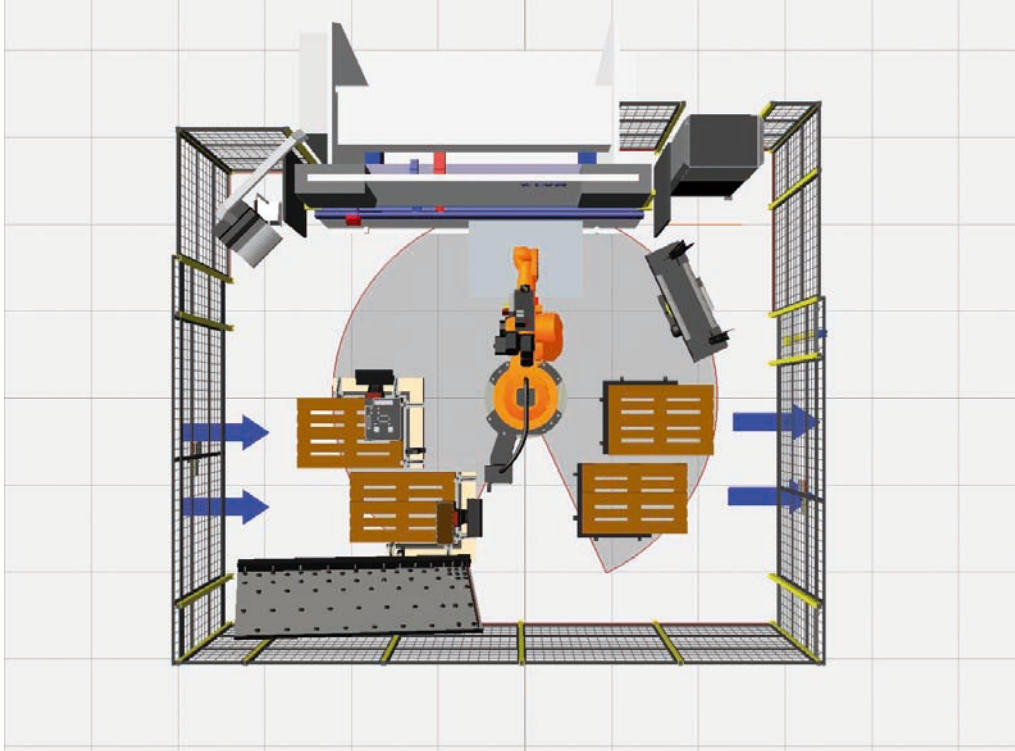
The LVD press brake within the RoboCell can be used with or without the robot. Making even single piece production feasible. RoboCell is even flexible enough to allow the operator to 'prove' the first part by hand and with the press of a button switch to 'Robotised Bending' mode.

Designed for Automation and Manual use

RoboCell has been designed to allow both automatic and manual operation of the press brake with a full 2 meters of space between the press brake and the robot. Also the press brakes working height has been maintained at a normal height for enhanced operator ergonomics.

Easy-Form® Laser

RoboCell is available with either LVD's PPEB or Easy-Form® series press brakes. The Easy-Form® Laser integrated adaptive forming system standard on the Easy-Form® series monitors and corrects in 'real-time' the bending angle of the component 'in process', compensating for all variations in material thickness, tensile strength and grain direction. With Easy-Form® Laser components will be perfect from the first to the last part.



Configuration 1 – Finished material removed from the side

Cell size:
6750 x 7200mm

Infeed positions:
1200 x 800mm (2x)
or 2000 x 1000mm (1x)

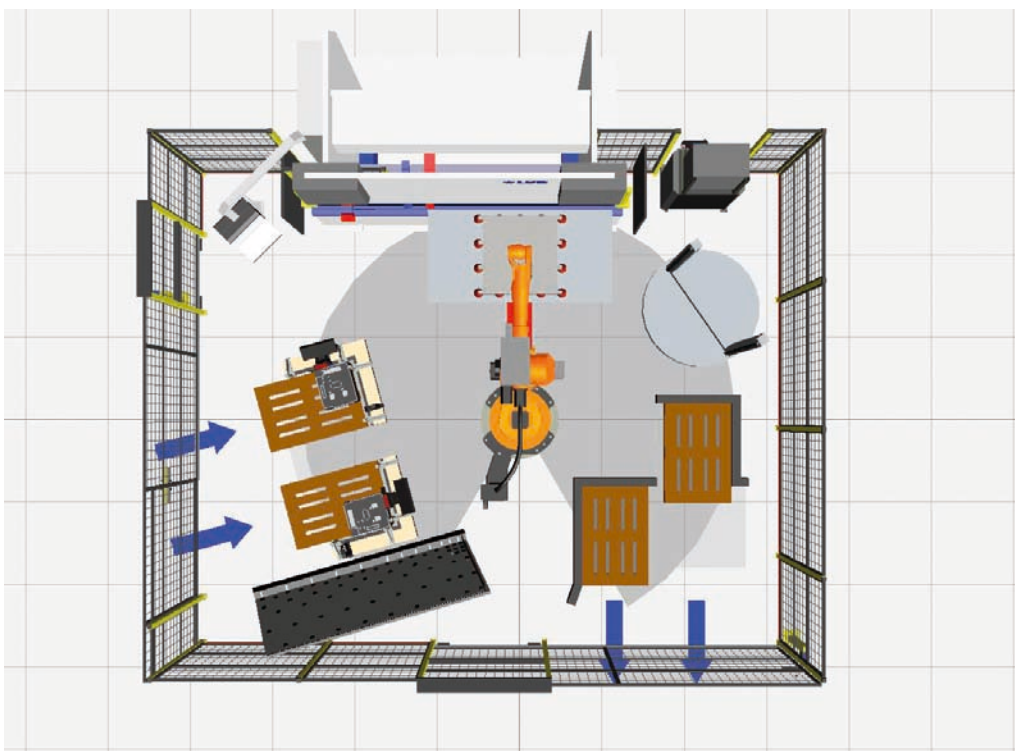
Outfeed positions:
1200 x 800mm (2x)
or 2000 x 1000mm (1x)

Max. part weight:
15Kg

Max. part dimensions:
Length up to 3000mm
Width up to 1000mm

Max. Thickness:
3mm

Press brake sizes:
80 tonne – 2.5m
110 tonne – 3m



Configuration 2 – Finished material removed from the front



ADDRESSES

HEADQUARTERS

LVD Company nv
Nijverheidslaan 2
B-8560 GULLEGEM
BELGIUM
Tel. + 32 56 43 05 11
Fax + 32 56 43 25 00
e-mail: info@lvd.be

Strippit Inc.
12975 Clarence Center Rd.
USA-AKRON NY 14001
UNITED STATES
Tel. + 1 716 5424511
Fax + 1 716 5425957
e-mail: info@strippit.com

SUBSIDIARIES*

LVD BeNeLux nv
Gullegem, Belgium

LVD GmbH
Lahr, Germany

LVD s.a.
Raismes, France

LVD Ltd.
Oxfordshire, United Kingdom

LVD Italia s.r.l.
Parma, Italy

LVD SWE-NOR A/S
Oslo, Norway

LVD GR E.P.E.
Volos, Greece

LVD-Polska Sp. z.o.o.
Kedzierzyn-Kozle, Poland

LVD SIT d.o.o.
Ajdovscina, Slovenia

LVD S 2
Tornala, Slovakia

LVD Napomar s.a.
Cluj, Romania

LVD do Brasil Ltda
Joinville, Brazil

P.T. LVD Center
Jakarta, Indonesia

LVD India Pvt Ltd
Haryana, India

LVD (Malaysia) Sdn. Bhd
Shah Alam, Malaysia

LVD Company Ltd.
Bangkok, Thailand

LVD-Strippit (Shanghai) Co., Ltd
Shanghai, China

**For full address details of your local subsidiary or agent, or to download the latest literature, please visit our website:*

www.lvdgroup.com